



JEFFERSON COUNTY'S SOLID WASTE FACILITY REPLACEMENT PROJECT

September 27, 2022

East Jefferson Fire and Rescue Station, 9193 Rhody Drive, Chimacum

Al Cairns, Project manager/Solid Waste Division Manager
Jefferson County

Dr. Victor O. Okereke, PH.D., P.E., DEE, CLSSS, Project Manager/President Vikek
Environmental Engineers, LCC

Penny Mabie, Principal,
Definitely-Mabie Consulting, LLC



Fusion Creative Works ®

SCS ENGINEERS



BLRB architects





WELCOME

WELCOME

WELCOME AND INTRODUCTIONS



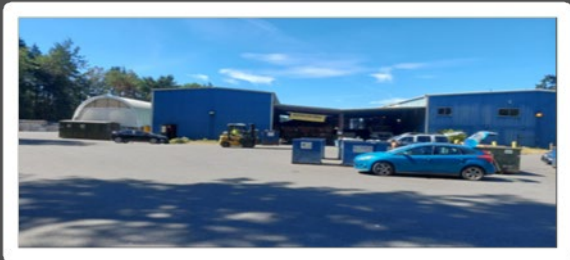


CURRENT STATE

WHAT ARE THE EXISTING SOLID WASTE SYSTEM FACILITIES?



Closed Landfill



Recycling Center and Drop off Sites



Transfer Station



Moderate Risk Waste Facility



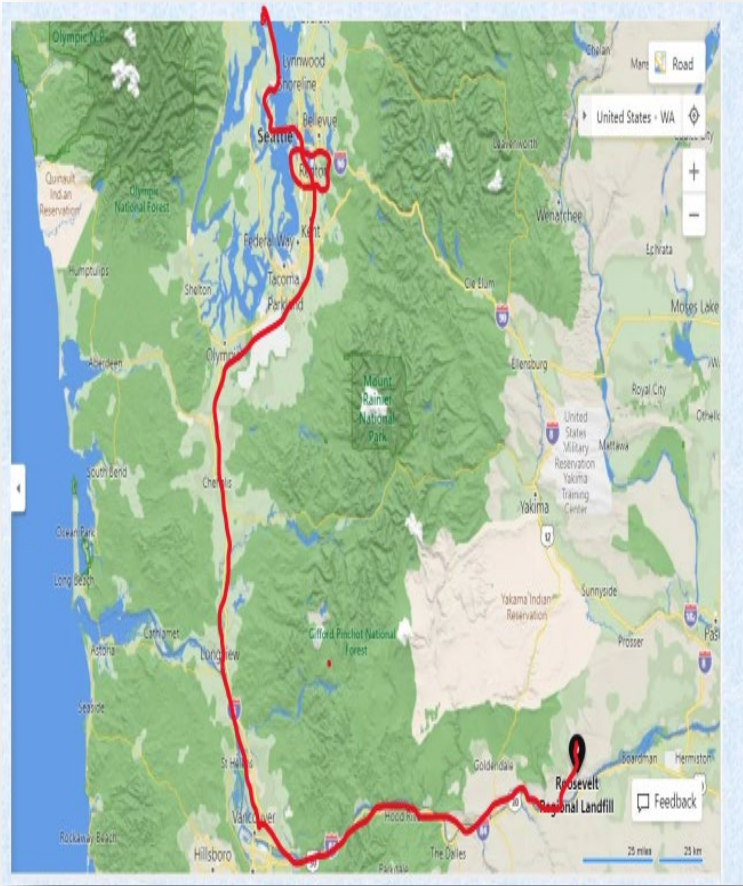
Rural Drop Box



Biosolids Facility

WHERE DOES IT ALL GO?

Our refuse long haul operation is like that of the cities of Seattle , Tacoma and Snohomish County



1 Refuse trailer loaded at the transfer station

2 Hauled to the Renton Inter modal station



3 Containers are loaded onto flat bed rail cars



4 Train takes refuse to the Roosevelt Regional Landfill

OUR FINANCIAL OPERATION



Enterprise fund

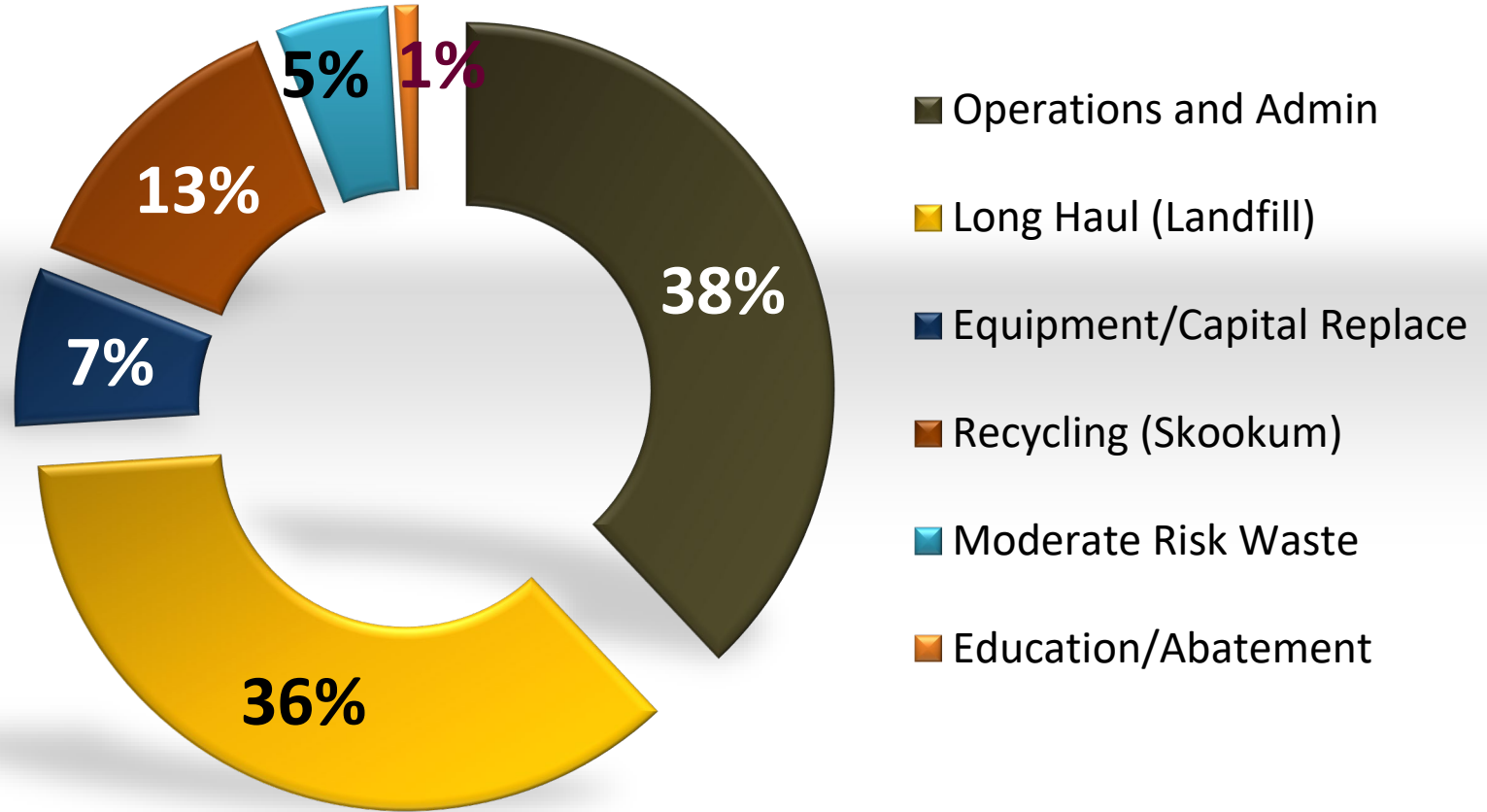


2022 Solid Waste Fund Budget
\$4,547,335

Grants : **0.4%** (2022)

2018 Tipping fee: **\$157.27 + 3.6% Solid Waste Tax; 99.6%** (2022)

OUR FINANCIAL OPERATIONS – BUDGETED EXPENSES



CURRENT STATE

WHY A REPLACEMENT SOLID FACILITY?



Our ability to manage the solid waste system cost-effectively is challenged by several factors

OUR COUNTY IS GROWING RAPIDLY



Growth

Reach a total of 40,093 residents by 2040, a 32% increase since 2015 - (per JCSWMP of 2016)

Waste Generation

Waste receipts exceeds facility capacity: 77 tons/day (2021) Vs 50 tons /day

CURRENT STATE

OLD FACILITY AND EQUIPMENT, HIGH MAINTENANCE OR REPLACEMENT COSTS



Outdated Facility: 29 years with Flat Floor and roof need replacement



Outdated Equipment: Old Knuckle Boom compactor not efficient



Single in/out bound Scale: Installed in 1992 ,need replacement

LACK OF FACILITY FLEXIBILITY

PREPARING FOR THE

FUTURE



Diversion and Recycling
Space limited to meet diversion and recycling needs



Household Hazardous Collection
None, availability limited by space



Need safe and efficient traffic circulation
Improvement constrained by space

IN SUMMARY – WHY A REPLACEMENT FACILITY?

Why?



Opportunity/ Project Goal

Recommend an optimal Solid Waste Replacement Facility Site and funding Plan that meets our current and future Solid Waste Needs

ROI

The cost of the problem / value of a solution:

- Cost effective solid waste services to the citizens
- Improved Station Safety
- Expanded diversion and recycling services
- Capability to handle future demand for another 40 years

LOOKING AHEAD INTO THE NEAR FUTURE



A Solid Waste Replacement Facility located at an optimal site, adequately funded, accepted by the community, and meets current and future needs of the citizens of Jefferson County while complying with all regulatory requirements

The background features a series of concentric circles in shades of light gray and beige, creating a tunnel-like effect. A white, wavy line curves across the lower right portion of the image.

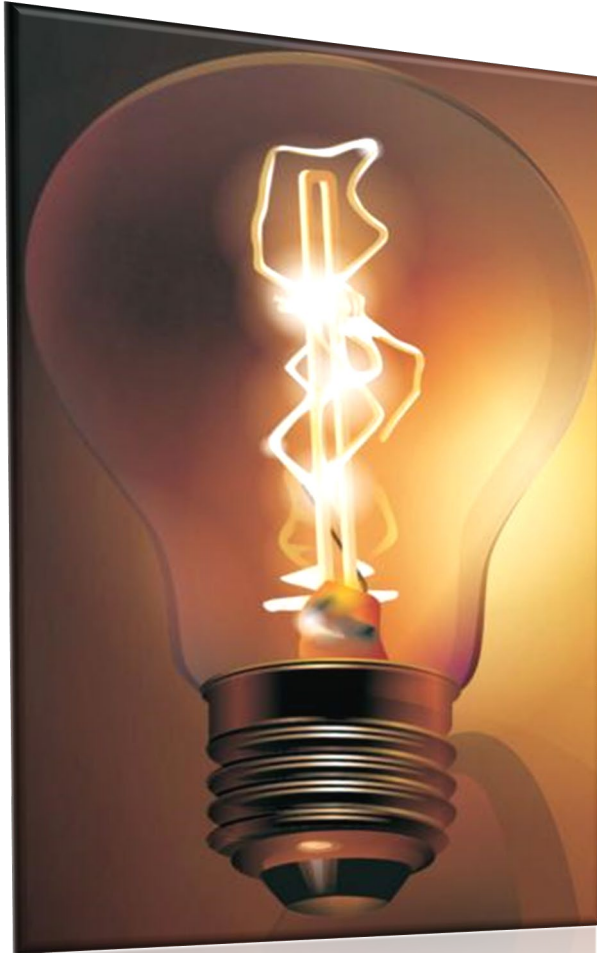
PROJECT DEFINITION

AREAS WE NEED SHARED UNDERSTANDING ON



Confidential

PROJECT GOAL



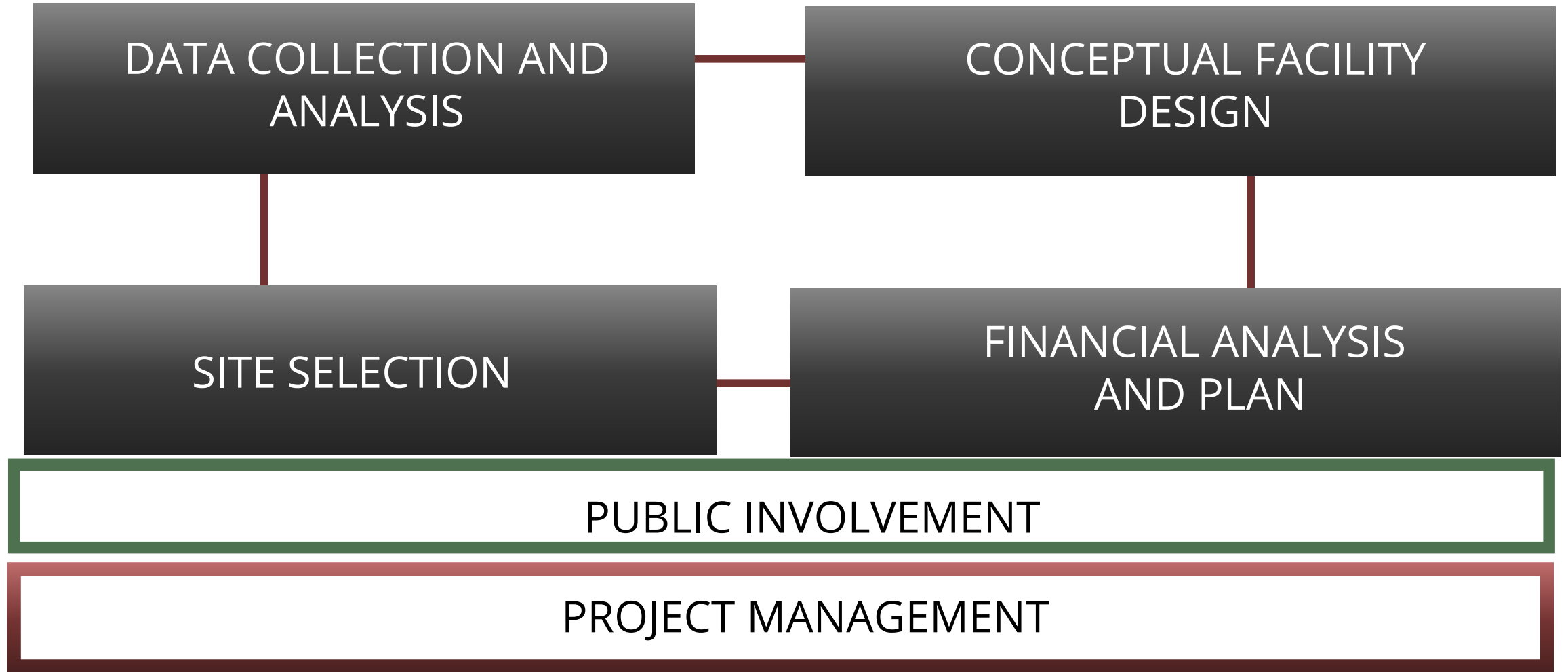
To recommend optimal conceptual design, site and financing plan for a solid waste replacement facility by January 2024

SPECIFIC PROJECT OBJECTIVES



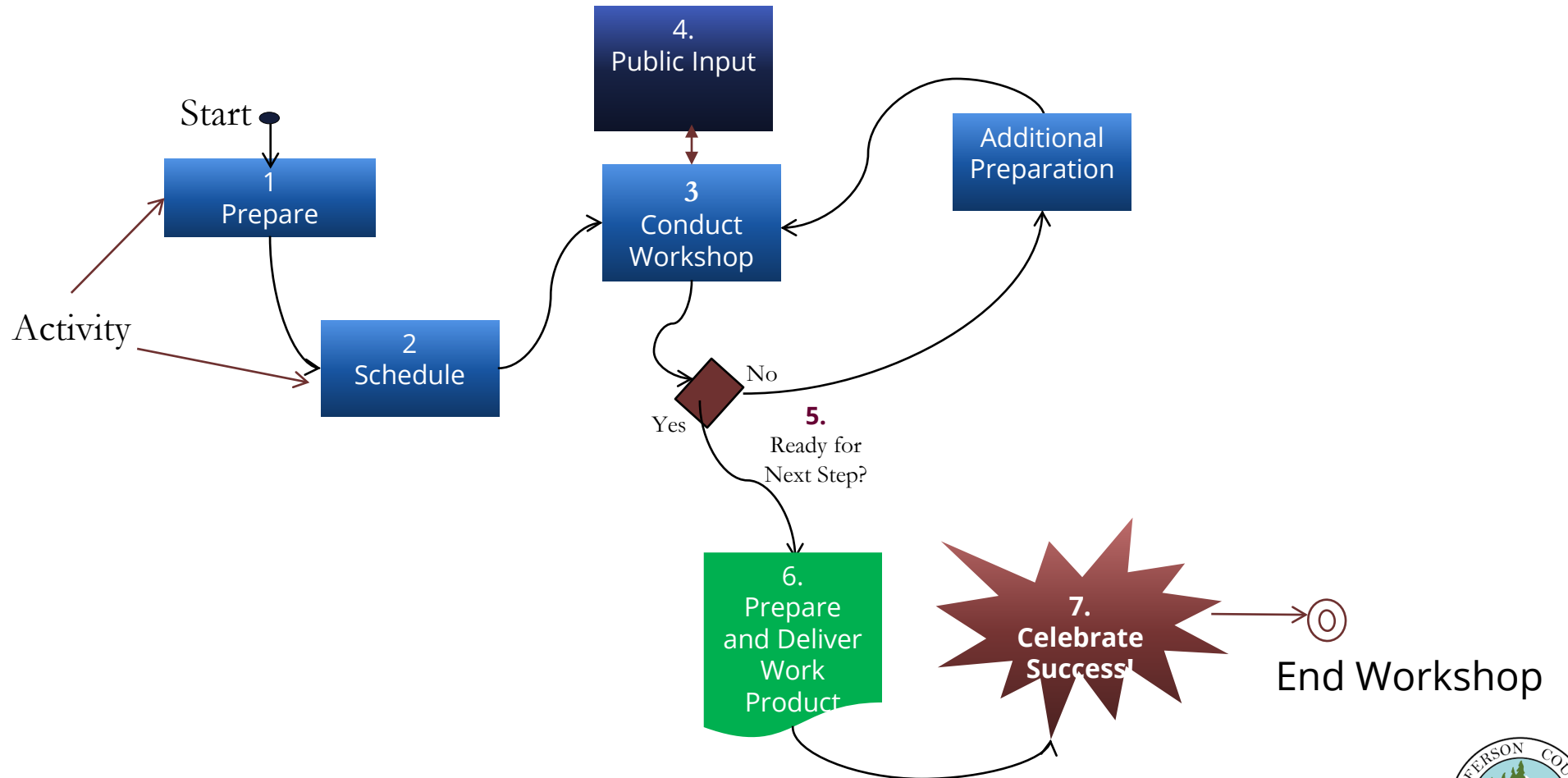
- By November 2023, achieve public acceptance of the recommended replacement solid waste conceptual facility, site and financing
- By December 2023, recommend a replacement solid waste conceptual facility, site and funding plan to the Board of County Commissioners and Port Townsend City Council

HIGH LEVEL SCOPE



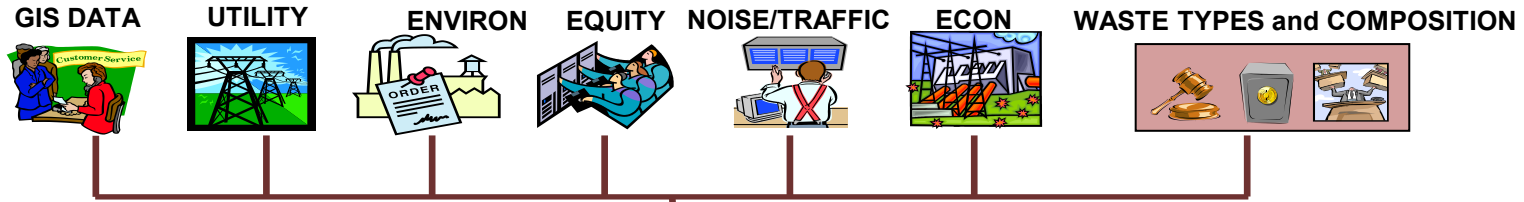
OUR GENERAL PROJECT ENGAGEMENT APPROACH

WORKSHOP PROCESS



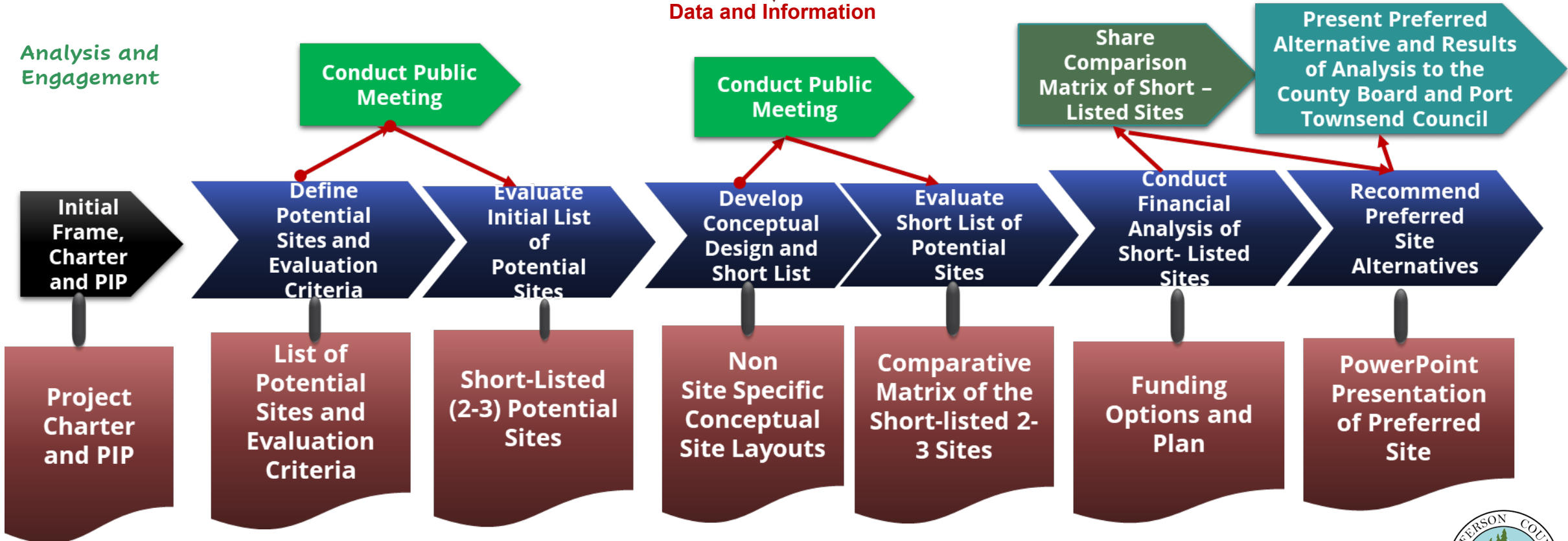
APPROACH - HOW WE WILL GET THERE

Data Collection activities

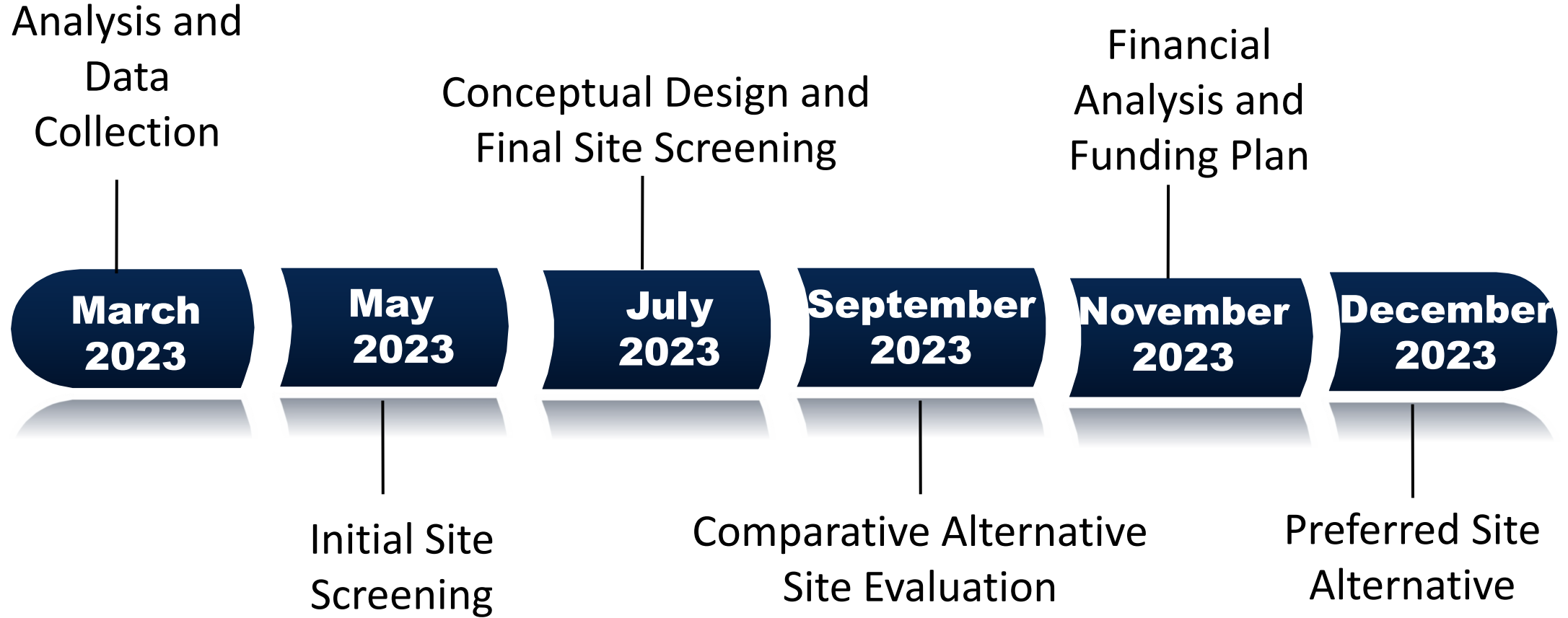


Data and Information

Analysis and Engagement



KEY TASK COMPLETION DATES



CORE VIKEK PROJECT TEAM MEMBERS



Victor O. Okereke
Project Director



Tom Karston
Lead
Financial Analysis and Plan



Gary Arndt
Lead
Document Quality Assurance



Penny Mabie
Lead
Public
Involvement
(Definitely Mabie)



Peter Battuello
Lead
Site Selection
(Pertect)



Sarah Fischer
Lead
Conceptual Facility
Design
(BLRB Architects)



Shiloh Schroeder.
Lead
Webpage Design
(Fusion Works)



Karam Singh
Lead
Organics Analysis
(SCS Engineers)





PUBLIC INVOLVEMENT

PUBLIC INVOLVEMENT ELEMENTS

- **Needs Assessment**

- Who cares?
- What are their issues? Aspirations?
- Summarize



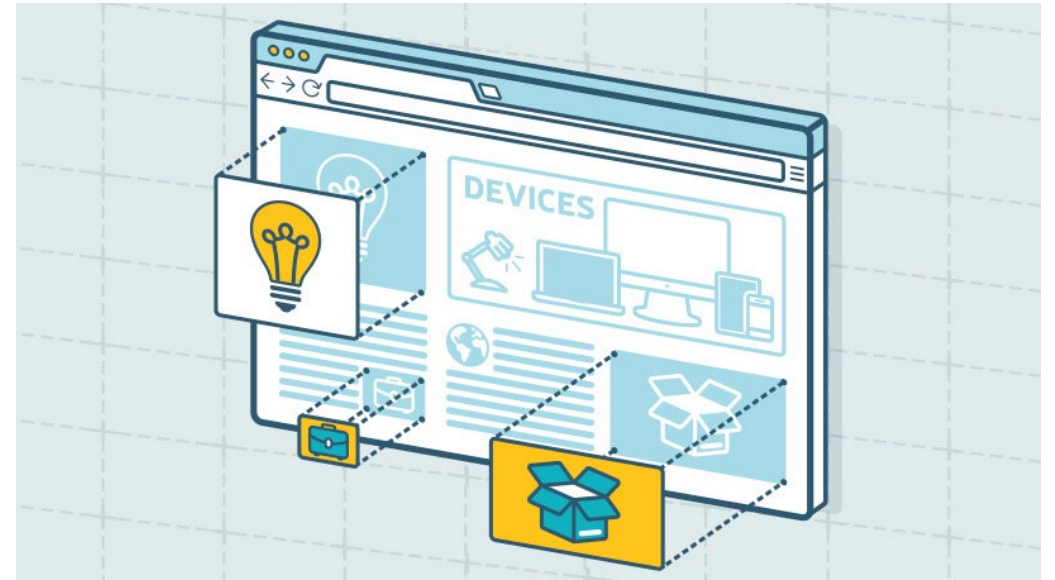
- **Public Involvement Plan**

- Stakeholders & issues
- Goals & objectives
- Key messages
- Outreach tools & schedule
- Materials
- Public input response coordin
- Website



WEBSITE

- Project-specific
- Sub-site to Solid Waste website
- Dynamic
- Invites and captures input
- Online “open house” to augment in-person public meetings
- Houses Solid Waste Facilities Task Force schedule and materials



NEEDS ASSESSMENT - STAKEHOLDER INTERVIEWS

- Who should I talk with?
- Who have you heard from?
- Who might have good information?
- Who might be very concerned?
- Who might be overlooked?



Zoom Whiteboard

QUESTIONS AND DIALOGUE



BREAK TIME

The background features a series of concentric circles in shades of light gray and beige, creating a tunnel-like effect. A white, wavy line curves across the bottom right portion of the image.

**PUBLIC
INVOLVEMENT
WORKSHOP**

WORKSHOP PURPOSE AND DESIRED OUTCOMES



The purpose of this workshop is to inform development of the public involvement plan, including identifying stakeholders, issues, methods, and messages to ensure the community is informed and involved in the facility siting process.

By the end of the session , we should all ...



Have a shared understanding of how and when the community will be informed and involved in the decision-making process.



Learn



Think



Take Notes



Share

IDENTIFYING STAKEHOLDERS AND KEY INTERESTS

Potentially affected / interested (Who?)	Interests / issues / aspirations (What or Why?)
Example: Near neighbors	Traffic, Noise, Litter

CORRELATING STAKEHOLDERS AND ISSUES

Issues →	Issue 1	Issue 2	Issue 3	Issue 4	Issue 5	Issue 6	Issue 7	Issue 8	Issue 9
Stkhldrs									
Stkhldr 1	X			X		X	X		
Stkhldr 2		X		X				X	
Stkhldr 3	X			X		X			
Stkhldr 4			X			X			
Stkhldr 5		X		X					X
Stkhldr 6	X				X		X	X	

STAKEHOLDER/COMMUNITY EXPECTATIONS

- **In the process?**

- What do people expect of a public process?
- How do people want to be engaged? Receive information?
- What has worked well in the past? Before COVID? During COVID?

- **For the project?**

- What have you heard?
- What do you think people will want? Not want?
- What will be key challenges? Risks?
- What will be critical to success?

Zoom
Whiteboard



PUBLIC INVOLVEMENT GOALS - DRAFT

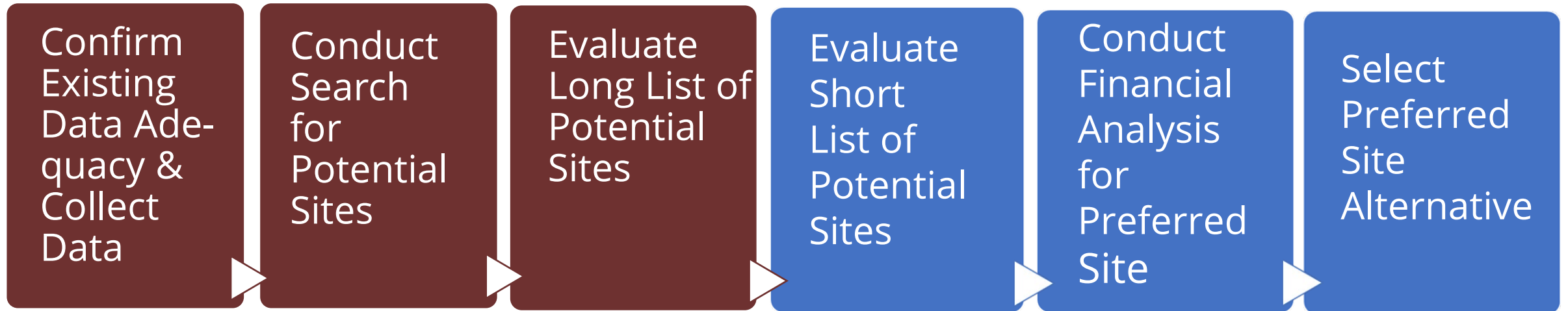
- The community's and key stakeholders' interests, issues and aspirations will be sought out and fully considered during the Solid Waste Facility Siting Process and in the decision.
- All members of the community will be invited and welcomed to provide input on the siting process.
- The community will be informed about how their input was considered and was reflected in the siting decision.



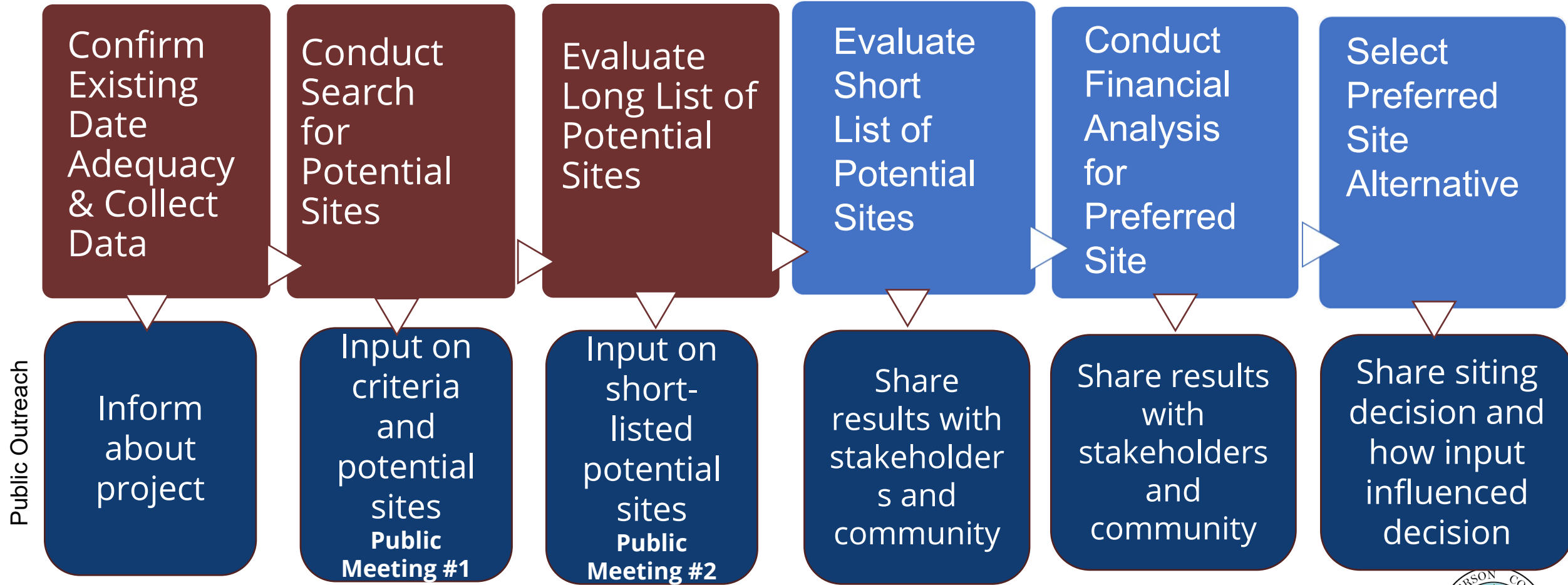
MILESTONES FOR PUBLIC OUTREACH AND INPUT

- **Project kick-off period - inform**
 - Launch project website
 - Announce project on Public Works and Solid Waste website
 - Announce Solid Waste Facilities Task Force and meetings
 - Inform community about how and when their input will be sought and used

SOLID WASTE FACILITY REPLACEMENT PLANNING PROCESS



PLANNING PROCESS & PUBLIC INVOLVEMENT MILESTONES



Public Outreach

SELECTING ACTIVITIES TO ACHIEVE PUBLIC INVOLVEMENT GOALS

- **Informing**

- How do people get their information?
- Where do people go when they have questions?
- Who are trusted sources?

- **Soliciting Input**

- How do people get their opinions heard?
- What mechanisms are most favored?
- What mechanisms are least favored?
- Who needs to ask for input? Does it matter?



KEY PUBLIC INVOLVEMENT MESSAGES

- What do people need to know about this project?
- ...about the site selection process?
- ...about solid waste facilities?
- ...about the public involvement process?

Zoom Whiteboard

WEB CONTENT

Sections or tabs of the website

Welcome	Background	Why Replacement?	New Facility Elements	Facility Planning PROCESS	Facility Planning STATUS	Solid Waste Facilities Task Force	Community Voice	Feedback	Thank you
<i>Welcome to the site; how to use the site; brief introduction to the project</i>	<i>Overview of Solid Waste System and facilities</i>	<i>State the problem with current facility</i>	<i>What would be included? What's the benefit to the community?</i>	<i>Overview of how process will go; project timeline</i>	<i>Dated paragraphs of what's happened and what's coming. Like a journal.</i>	<i>Purpose of the task force, who is on it, schedule of meetings, and materials</i>	<i>How the community can be involved. Host materials for community meetings</i>	<i>Host surveys maps, comment forms, etc. Place to give feedback.</i>	<i>Thanks for coming by. Preview next steps.</i>

PUBLIC INVOLVEMENT WORKSHOP SUMMARY

1

This workshop will inform the draft Public Involvement Plan

2

You will have opportunity to see the Public Involvement Plan before finalization

3

The Public Involvement Plan will be dynamic and responsive to project and community needs

PUBLIC COMMENTS

Public comment guidelines

- The Task Force will listen and not respond.
- Comment time will be determined based on how many people wish to comment.
- Public comment may also be submitted via email, website or phone.
- All comments, regardless of how they are received, will be shared with the Task Force.



What would you like the Solid Waste Facilities Task Force to consider during their work?

TASK FORCE QUESTIONS AND DIALOGUE



The background features a series of concentric circles in shades of light gray and beige, creating a tunnel-like effect. A white, wavy line curves across the lower right portion of the image.

NEXT STEPS

ALL ABOARD? NEXT STATIONS (AL AND VICTOR)



Kick-Off/Workshop Meeting Notes and Publish

Develop Project Charter

Develop Public Involvement Plan

Work with SWFTF to Schedule Workshops

THANK YOU!